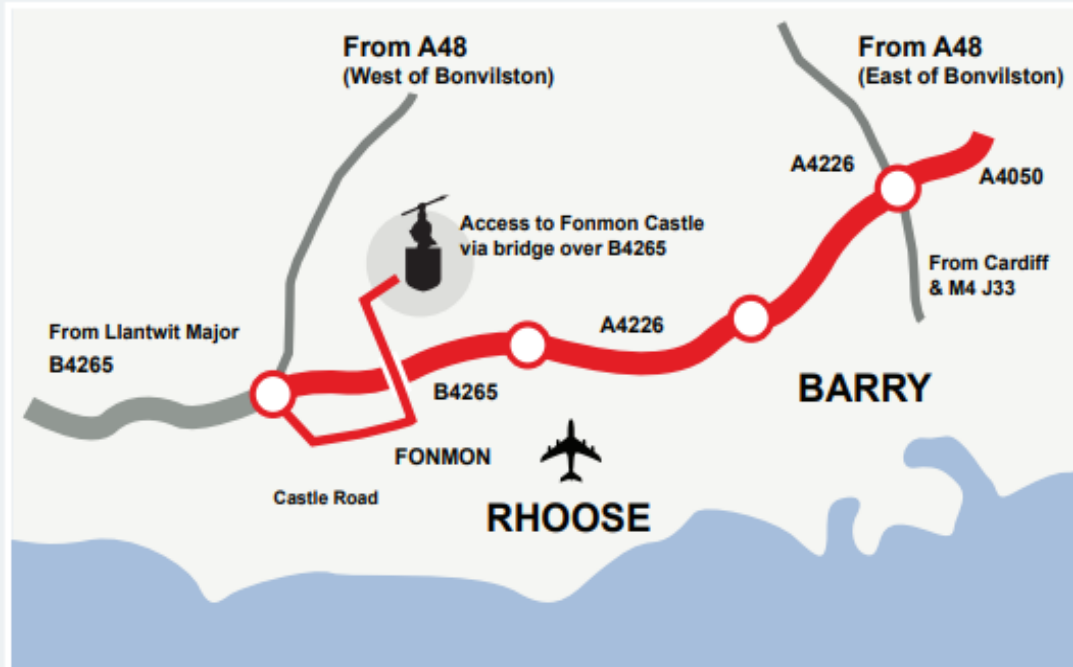


# *To Fonmon Castle*



From J33 of the M4 follow the A4232 towards Cardiff, then take A4050 towards Cardiff Airport.

Follow A4226/B4265 towards Llantwit Major – you will pass the Airport on your left.

Ignore the sign for Fonmon, instead continue under the bridge for 2/3 of a mile. Turn left towards Rhose and East Aberthaw.

Go up a small hill (Burton Terrace) then turn left onto Castle Road. The turning is easy to miss, so look out for the brown sign.

Follow the road for about a mile. As the road bends right, the Castle entrance is on your left through two wooden gates.

SatNav sometimes tries to take you a different way and we have heard of people ending up not quite at our gate; these directions are much more reliable.